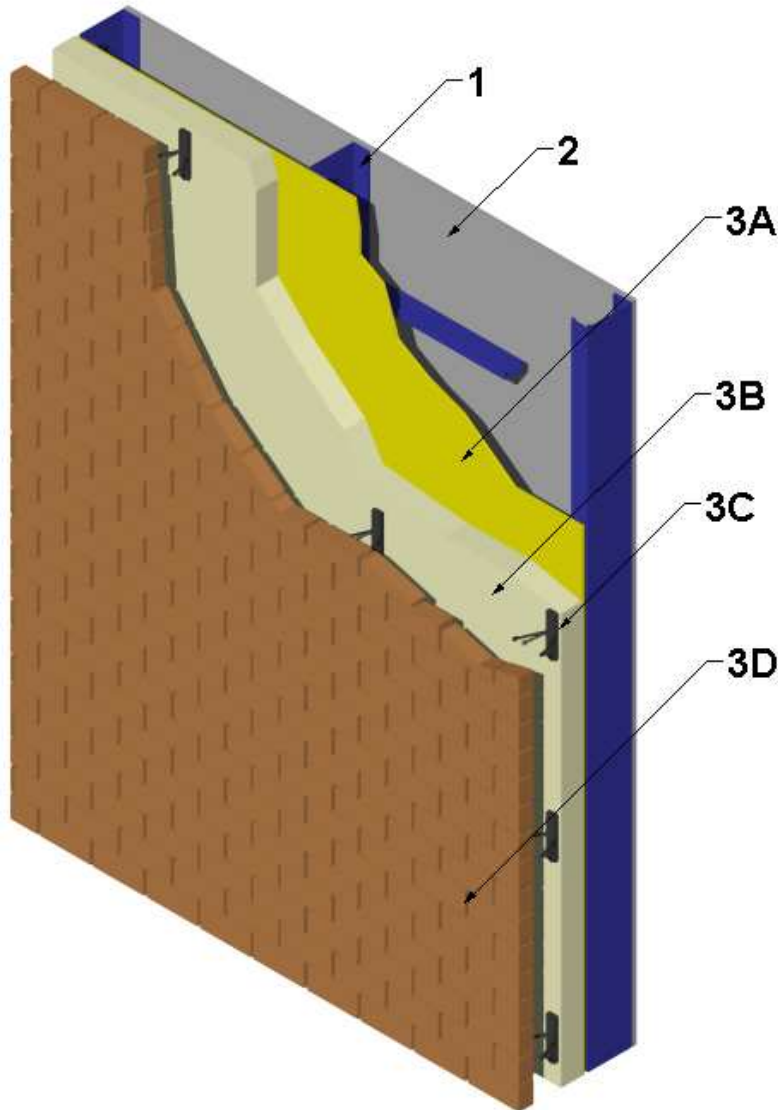


---

Design Number LI/FI 30-01  
Exterior Non-Load bearing Wall System  
LaPolla Industries, Inc.  
FOAM0-LOK™ FL2000  
NFPA 285 (2006)  
Rating: 1/2 hour (30 minutes)

---



1. Steel Studs: Install nominal 3-5/8 inch, 20 GA Galvanized steel studs spaced 24-inches on center. Secure to top and bottom 20 Gage top and bottom track (not shown) using 7/16-inch long pan head framing screws. Install 16 GA CRC lateral bracing perpendicular to the steel studs spaced 48-inches on center.
2. GYPSUM BOARD: Install 5/8-inch thick Type X gypsum board installed with long dimension perpendicular to studs. Attach to steel studs (Item 2) using #6 X 1-1/4 inch long zinc-plated self drilling bugle head screws spaced 8-inches on center around perimeter and 12-inches on center in the field.

- A. JOINT TAPE AND COMPOUND: (Not Shown) After gypsum board (Item 2) is attached, apply a level 2 finish consisting of the following elements: Vinyl or casein, dry or premixed joint compound to face layers of gypsum board in two coats to all exposed screw heads and gypsum board butt joints. Embed a minimum 2-inch wide paper, plastic, or fiberglass tape in first layer of compound over butt joints of the gypsum board.
3. EXTERIOR WALL COVERING: The exterior wall covering system shall incorporate the following construction features which are part of the Wall System:
- A. EXTERIOR SHEATHING: Install 1/2-inch thick Georgia Pacific Densglass® Gold Exterior Sheathing with the long edge perpendicular to steel studs (Item 1). Attach using #6 X 1-1/4-inch long zinc-plated self drilling bugle head screws 8-inches on-center around the perimeter and 12-inches on center in the field.
- B. CERTIFIED MANUFACTURER: LaPolla Industries, Inc.  
CERTIFIED PRODUCT: Polyurethane Foam Insulation  
MODEL: FOAM-LOK™ FL2000  
EXTERIOR WALL INSULATION: Spray apply nominal 3 inches of FOAM-LOK™ FL2000 spray polyurethane foam insulation to exterior sheathing (Item 3A).
- C. ANCHORS: Install nominal 3-1/2-inch Hohmann & Barnard X-Seal™ Anchors with nominal 3-inch X 3-inch X 3/16-inch thick VB Vee Byna Ties. Secure anchors through exterior wall insulation (Item 3B) and exterior sheathing (Item 3A) to steel studs (Item 1) using nominal 5-inch long zinc coated hex head self drilling screws spaced nominally 24-inches on center.
- D. BRICK: Install nominal 4-inch red clay brick (3- 5/8 inch X 2 ¼ inch X 7 5/8 inch) laid in a running bond pattern. Use Type S masonry cement, leaving a nominal 2-inch air gap between the brick and the exterior wall insulation (ITEM 3B).